

Boardwalk

Sherwell Road

BRISLINGTON

APPROXIMATE FLOOR AREA
83.7 SQM / 901 SQFT

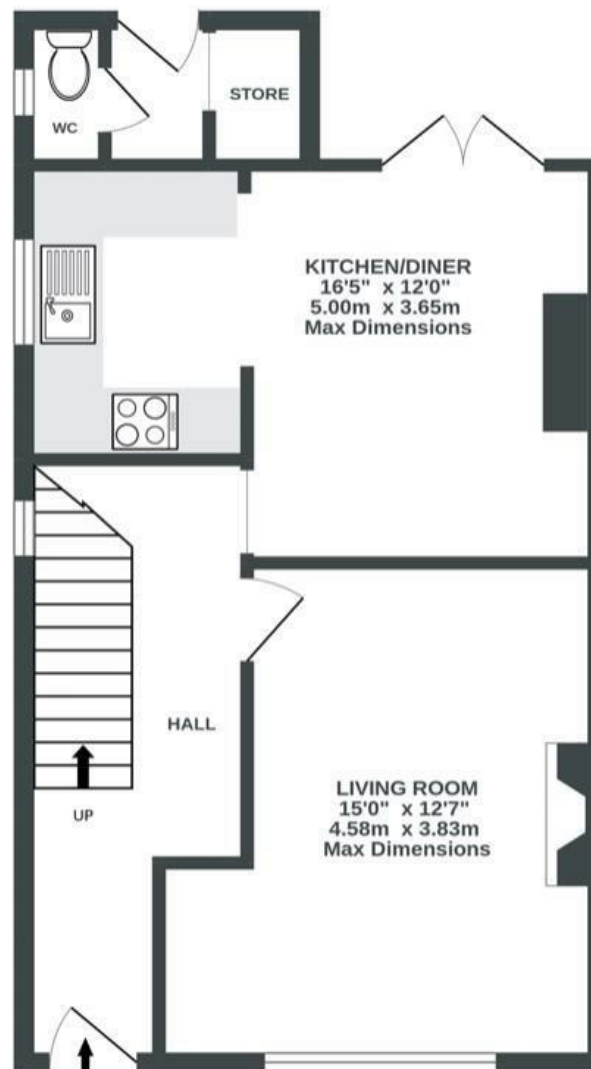
BOOK A VIEWING

01179 898 222

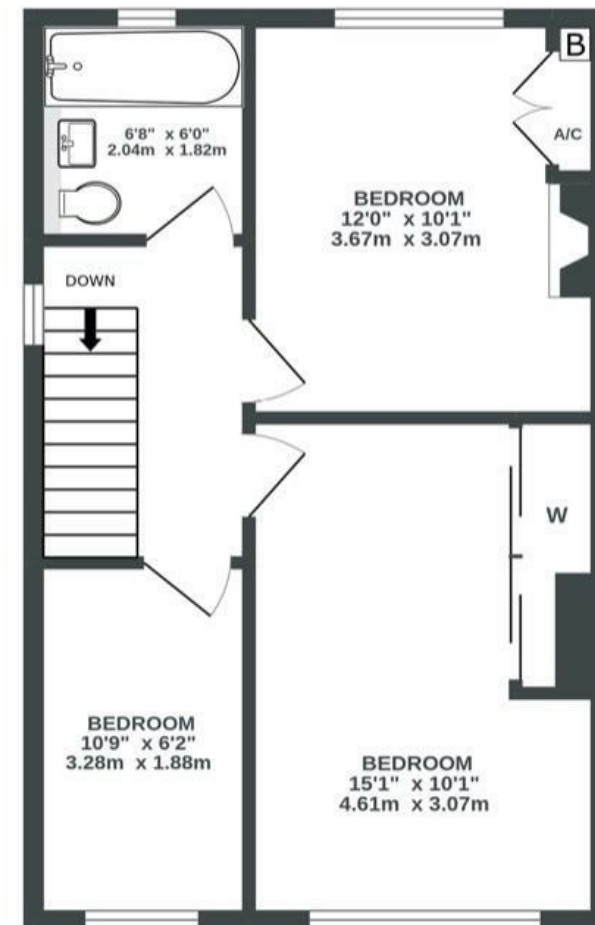
hello@boardwalkpropertyco.com



GROUND FLOOR
467 sq.ft. (43.4 sq.m.) approx.



1ST FLOOR
433 sq.ft. (40.3 sq.m.) approx.



Illustrations are for reference purposes only, measurements are approximate, not to scale.

~~Boardwalk~~

Sherwell Road

, BRISTOL



£380,000



Bristol, BS4

4 IX



3 Bedrooms



2 Bathrooms

"When I first walked into the house I knew that there was lots of potential to create a beautiful new space, which feels cosy and I can call home. It took me four months to renovate and it was so worth it, especially when I discovered the beautiful old floorboards - I'm a huge fan! The large garden with the split patio and grass area has been a wonderful addition to the house and I had some of the best evenings there with family and friends."

"I absolutely love living in Brislington, especially with my dog Alfie. Having Nightingale and Victory Park on my doorstep has been a game changer. Not only that I didn't have to drive every day to take him for a walk, Nightingale in general is such a beautiful woodland with a little stream, perfect for a morning run or mid afternoon stroll. Brislington is a great and safe area to live in with a lovely neighbourhood, brilliant schools and access to Bristol's city centre."

